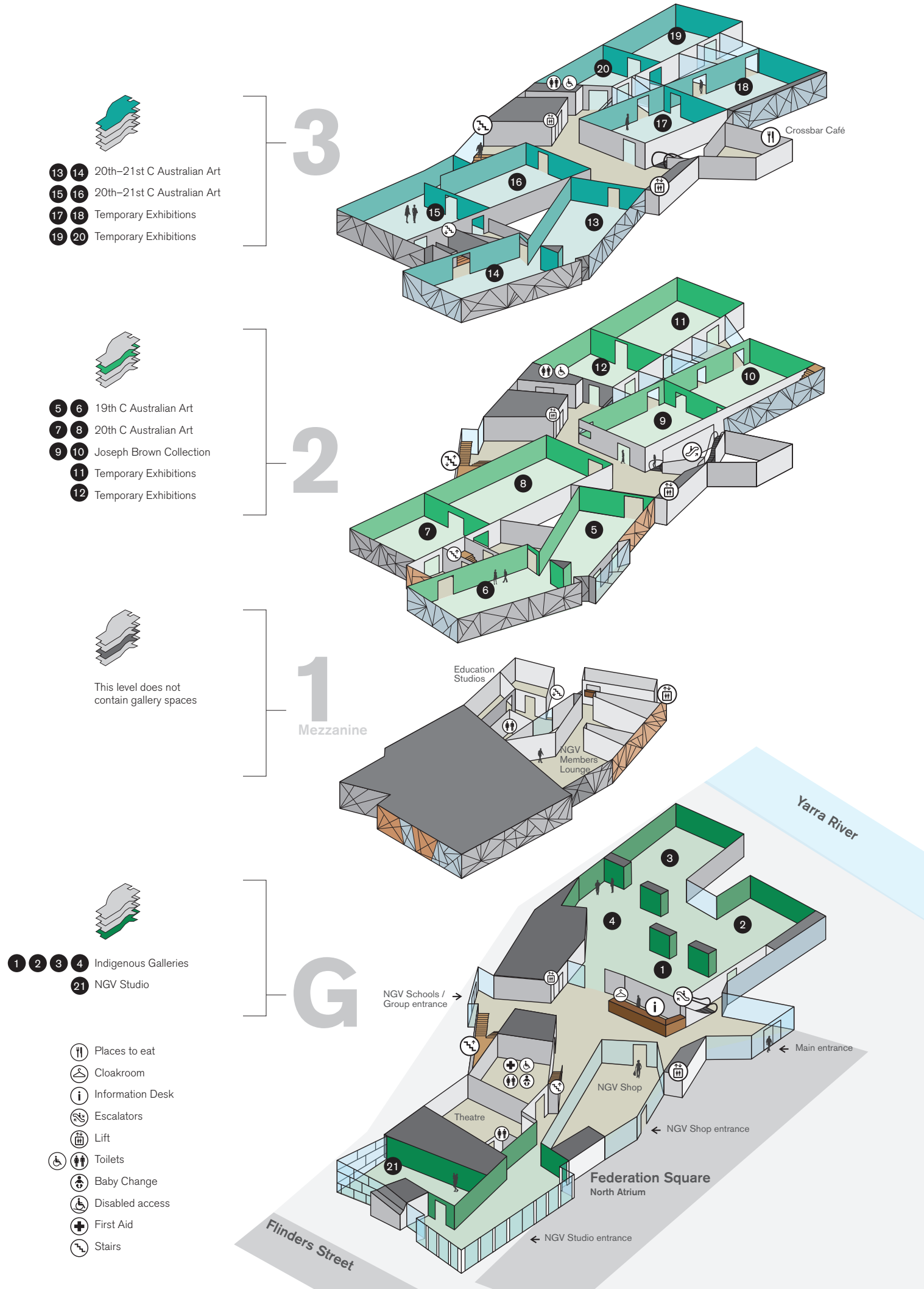


THE IAN POTTER CENTRE: NGV AUSTRALIA



The National Gallery of Victoria is Australia's favourite gallery. The extensive NGV Collection is recognised amongst the world's best, and is proudly displayed across two venues – NGV International and The Ian Potter Centre: NGV Australia. NGV International houses the Gallery's collections of international art and is open 10am–5pm, closed Tuesdays. NGV Australia is home to the Australian art collection – including works by the Aboriginal and Torres Strait Island communities – and is open 10am–5pm, closed Mondays. Entry to the NGV Collection is free; however entry fees may apply to special exhibitions.

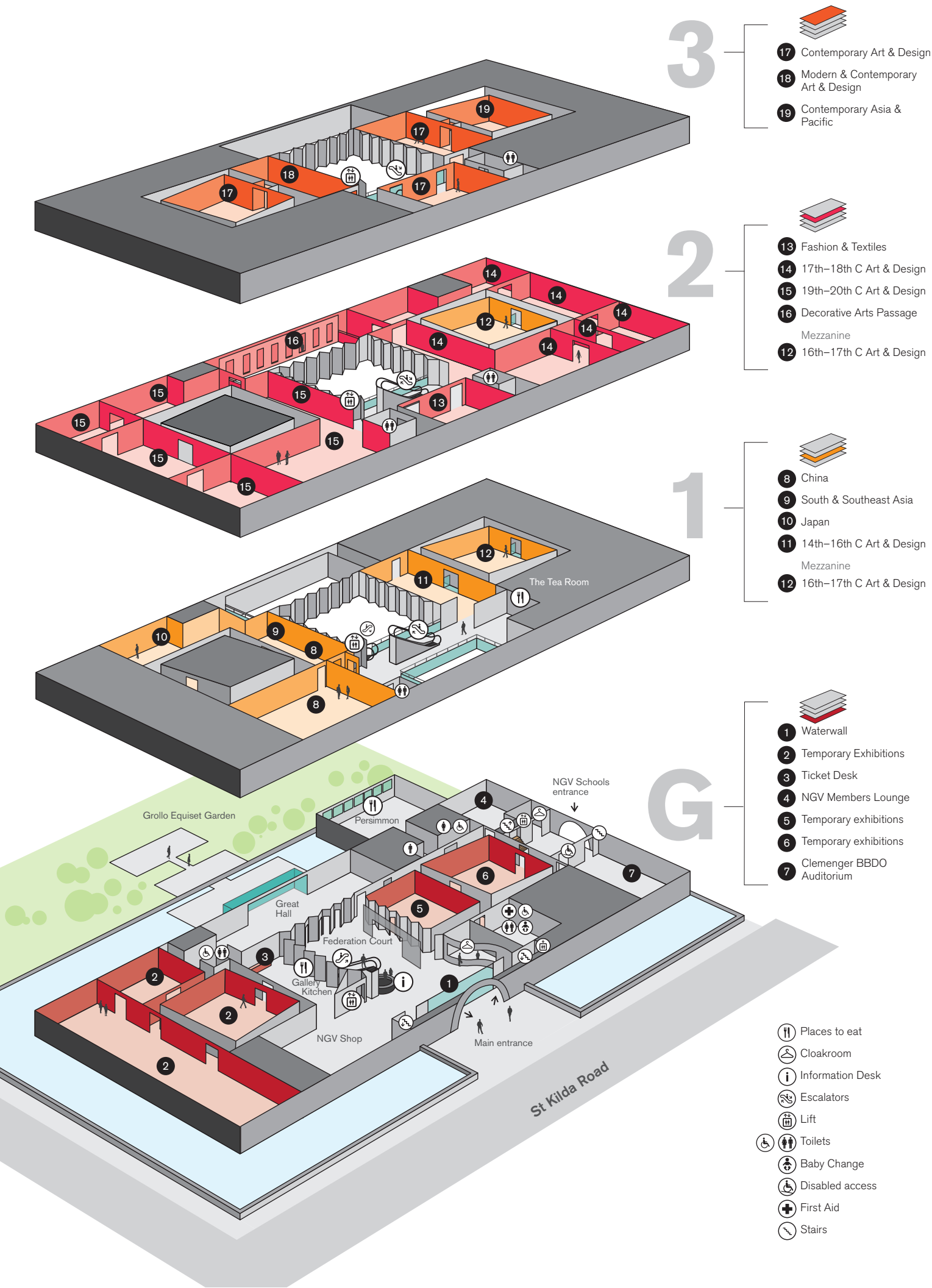
This map illustrates the tram network in Melbourne, Australia, with a focus on the city center. Key features include:

- Tram Routes:**
 - Tram routes 70, 75 and City Circle are shown in the north, near Flinders Street.
 - Tram routes 1, 3, 5, 6, 8, 16, 64, 67 & 72 are shown in the south, near Federation Square.
- Key Locations and Landmarks:**
 - Flinders Street Station:** A major tram hub located on Flinders Street.
 - Federation Square:** A prominent landmark in the city center.
 - Yarra River:** The river flowing through the city, with the Yarra Bridge crossing it.
 - Southbank Boulevard:** A major thoroughfare on the south bank of the Yarra River.
 - Alexandra Gardens:** A park area located south of the Yarra River.
 - Hammer Hall and Arts Centre Melbourne:** Cultural venues located near the Yarra River.
- Tram Stops:** Indicated by icons of a tram on tracks, located at Flinders Street Station, Federation Square, and near the Yarra River.
- Logos:**
 - NGV Australia:** The National Gallery of Victoria, located near Federation Square.
 - NGV International:** The International Contemporary Art Museum, located near the Yarra River.
- Streets:**
 - Flinders Street:** A major street running north-south through the city center.
 - Swanson Street:** A street running east-west, north of Flinders Street.
 - Russell Street:** A street running east-west, south of Flinders Street.
 - St Kilda Road:** A major street running north-south, south of the Yarra River.

The Ian Potter Centre: NGV Australia
Federation Square
10am–5pm, Closed Mondays

WELCOME

NGV INTERNATIONAL



Your Visit

For details on the use of personal cameras and sketching in the gallery please visit the Information Desks. An NGV photographer/videographer may be present at NGV events. If you do not wish to be photographed or filmed, please let an NGV staff member or the photographer/videographer know.

All Abilities Access

The NGV is committed to access for all. Please visit the Information Desks for details of Access programs, Companion and Carer support, hearing loops and Braille signage. Guide dogs and other registered assistance dogs are welcome. The NGV is fully wheelchair accessible. Wheelchairs are available from the Information Desk at both galleries. Booking is advised. For bookings or further information phone 03 8620 2222, or visit the Information Desks.

Location Guide



NGV International
180 St Kilda Road
10am–5pm, Closed Tuesdays